



LIGHTNING SOCIETY

# NEW LOCATION

## MEMBERS DECK

Nicola Cartwright  
[nicola@lightningsociety.com](mailto:nicola@lightningsociety.com)  
646.617.0067



# INTRODUCING THE LIGHTNING ESTATES

WELCOME TO THE HISTORIC QUAKERTOWN MANSION, A PRIVATE THIRTY ACRE ESTATE HIDDEN IN THE PENNSYLVANIA WOODS JUST TWO HOURS FROM NEW YORK CITY.

- FIFTEEN LARGE BEDROOMS
- NINE BATHROOMS
- INDOOR POOL, HOT TUB AND SAUNA
- CO WORKING SPACE
- HUGE OUTDOOR DECK
- EXTENSIVE PRIVATE GROUNDS
- PRIVATE LAKE
- PRIVATE GARDENS



A NEW LIFESTYLE  
AWAITS AT THE  
LIGHTNING ESTATE,  
QUAKERTOWN, PA





# ENJOY A RARE OPPORTUNITY TO LIVE ON OUR SPRAWLING, PICTURESQUE ESTATE SURROUNDED BY FRIENDS.

---

## OUR COMMUNITIES ARE ABOUT ENRICHING YOUR LIFE WITH MORE

THIS NEWLY RENOVATED FIFTEEN BEDROOM MANSION OFFERS SERENE VIEWS ACROSS A PRIVATE LAKE, SPA-LIKE AMENITIES, AND THIRTY ACRES OF LAND TO EXPLORE. YOU WILL ENJOY PRIVATE POOLS, HOT TUBS AND SAUNAS, MULTIPLE FIREPLACES, AND EXCEPTIONAL PRIVACY SURROUNDED BY LANDSCAPED GROUNDS.

An aerial photograph of a large, multi-winged brick mansion with a red roof, situated on a lush, green estate. A winding asphalt driveway leads to the property, and a large, serene lake is visible in the background. The estate is surrounded by dense trees and landscaped grounds.

13,000 SQ FT ESTATE  
SITUATED ON THIRTY LANDSCAPED ACRES

MOVE IN DATE  
SPRING 2021



# OUR INTEGRATED COMMUNITIES ARE MORE THAN A LIVING ARRANGEMENT

---

OUR MISSION IS TO REDEFINE THE ACT OF LIVING BY CRAFTING MEANINGFUL CONNECTIONS AND A SENSE OF BELONGING WITHIN OUR INTENTIONAL COMMUNITIES.

SINCE LAUNCHING OUR FIRST SPACE IN BUSHWICK, FOUR YEARS AGO, LIGHTNING SOCIETY HAS HOSTED HUNDREDS OF CULTURAL, WELLNESS AND THOUGHT LEADERSHIP PROGRAMS. OUR MEMBERS ENJOY MORE THAN JUST A LIVING ARRANGEMENT- THEY "INTERLIV", EVOLVING AS LEADERS, CONNECTORS AND CONTRIBUTORS.

WE HAVE A STRONG GROWING COMMUNITY AND OUR SPACES SELL OUT FAST. WE ENCOURAGE YOU TO RESERVE YOUR SPACE QUICKLY IF THIS LIFESTYLE RESONATES WITH YOU.



— GUIDING PRINCIPLES —

**PRIORITIZE BELONGING**  
**CELEBRATE CONTRIBUTION**  
**PRACTICE AUTHENTICITY**

# INTERLIVING

THE ACT OF INTEGRATING YOUR DAILY LIFE WITH THE SHARED VALUES OF AN INTENTIONAL COMMUNITY.  
MAKE THE MOST WITH YOUR TIME, YOUR HARD EARNED MONEY AND YOUR COMMUNITY.

---

- ENJOY A SENSE OF BELONGING, AND A CONNECTION WITH LIKE-MINDED FRIENDS. OUR COMMUNITY-FIRST APPROACH PROTECTS OUR MEMBERS FROM FEELINGS OF LONELINESS IN THESE TIMES OF CHANGE AND INFUSES EACH DAY WITH NEW OPPORTUNITIES FOR INSPIRATION, LEARNING, AND SOCIAL INNOVATION.
- HERE “MAKING A DIFFERENCE” COMES WITH INFINITE POSSIBILITIES. WITHIN A SINGLE HOUSE, THERE MAY BE SCIENTISTS, ARTISTS, ENTREPRENEURS, ENGINEERS, AND EVERYTHING IN BETWEEN, CREATING GENERATIVE CONNECTIONS BETWEEN RESIDENTS WHO SHARE SIMILAR VALUES AND PASSIONS.
- AT LIGHTNING SOCIETY, INTER-LIVING IS THE PRACTICE OF BRINGING EXTRAORDINARY PEOPLE UNDER ONE ROOF TO LIVE, WORK AND CHANGE THE WORLD TOGETHER. “HOME” IS REINVENTED WITH A NEW PURPOSE. IT’S A COMMUNITY, AN ETHOS, A SERIES OF OPPORTUNITIES FOR COLLABORATION.



# TRANSPORTATION AND LOCAL SHOPPING

HOUSE INCLUDES ACCESS TO SHARED VEHICLES

## TRANSPORTATION

- 50-75 minutes to NYC by car
- 15 minutes to train station, 1.5 - 2 hours into NYC

## RESTAURANTS AND COFFEE SHOPS:

- The Trattoria - Rustic Italian fare
- Vintage Steak House - high-end steaks & fish
- Sputino St James - Brick oven pizza
- Voila the Bistro - Intimate French fare
- Soul Brew - Quaint coffeehouse





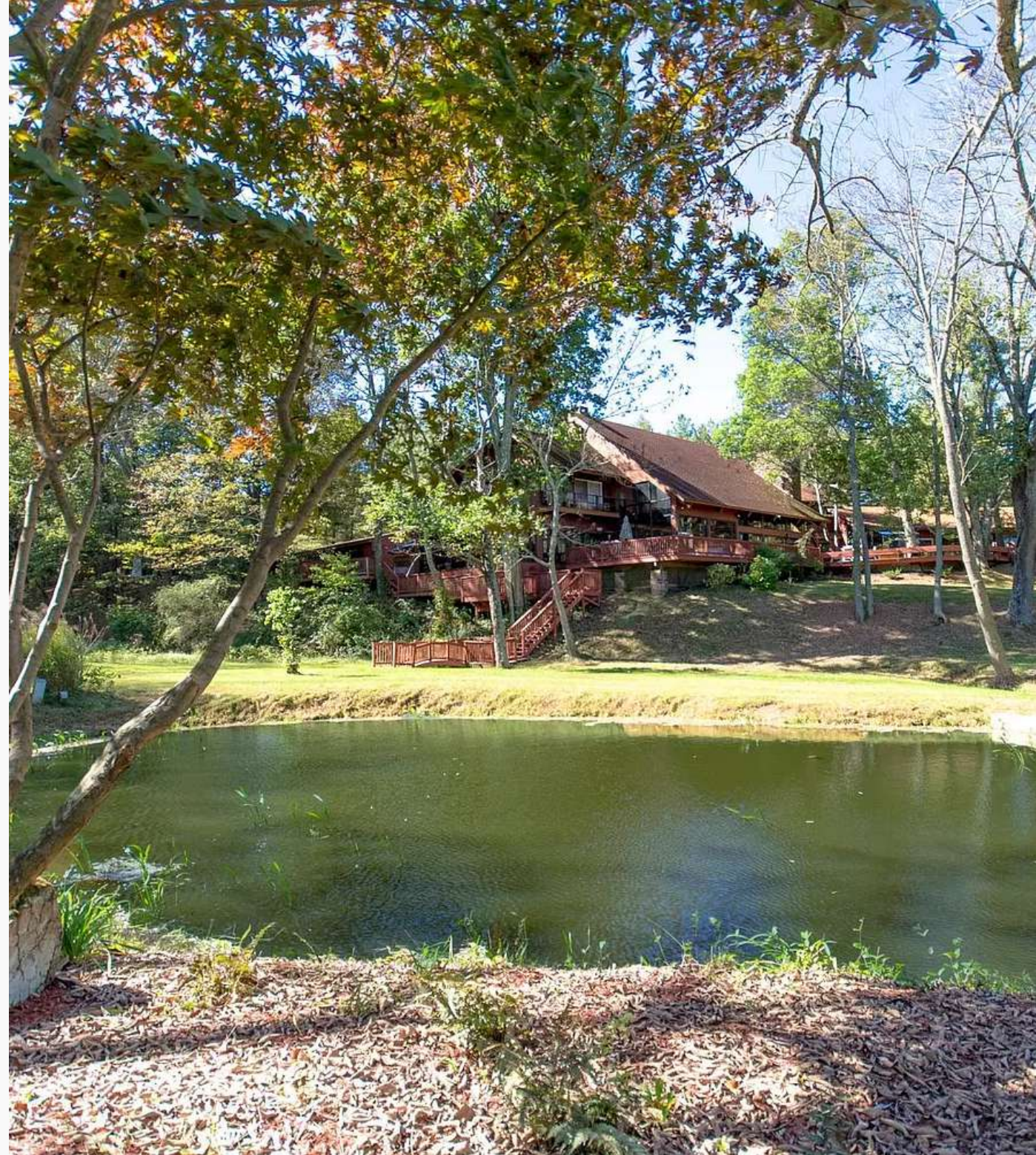
LIGHTNING  
SOCIETY

# CONNECT WITH NATURE

---

## HIKING, SWIMMING AND SKIING WITHIN A 30 MINUTE DRIVE

- DELAWARE WATER GAP
- LAKE TOWHEE
- HIGH BRIDGE TRAIL
- STERNER MILL TRAIL
- ELEPHANT TRAIL HEAD
- SENTINEL ROCK
- NOCKAMIXON STATE PARK
- RINGING ROCKS COUNTY PARK
- LAKE TOWHEE PARK
- VALLEY FORGE NATIONAL HISTORICAL PARK
- DELAWARE CANAL STATE PARK
- PEACE VALLEY PARK





# OUR COMMUNITIES ARE ABOUT ENRICHING YOUR LIFE WITH MORE

## OUR PROPERTIES ENJOY THE FOLLOWING SHARED AMENITIES

- HOUSE MANAGER FOR COMMUNICATION, LOGISTICS AND HOUSE MAINTENANCE
- INTENTIONAL GATHERINGS LIKE YOGA, MEDITATION, SALONS, AND LEARNING OPPORTUNITIES.
- IN HOUSE FITNESS AREA TO KEEP YOUR BODY HEALTHY
- CO-WORKING SPACE FOR MEETINGS OR FOCUSED HEAD SPACE
- SERENE OUTDOOR SPACES FOR WORK OR LEISURE
- PADDLE BOARDS AND KAYAKS
- RELIABLE WIFI
- ACCESS TO OUR OTHER PROPERTIES IF YOU'RE TRAVELING
- CAR-SHARE







# SPACE IS LIMITED : APPLY NOW

646.617.0067 | [nicola@lightningsociety.com](mailto:nicola@lightningsociety.com)

[lightningsociety.com/roommate-application](https://lightningsociety.com/roommate-application)

